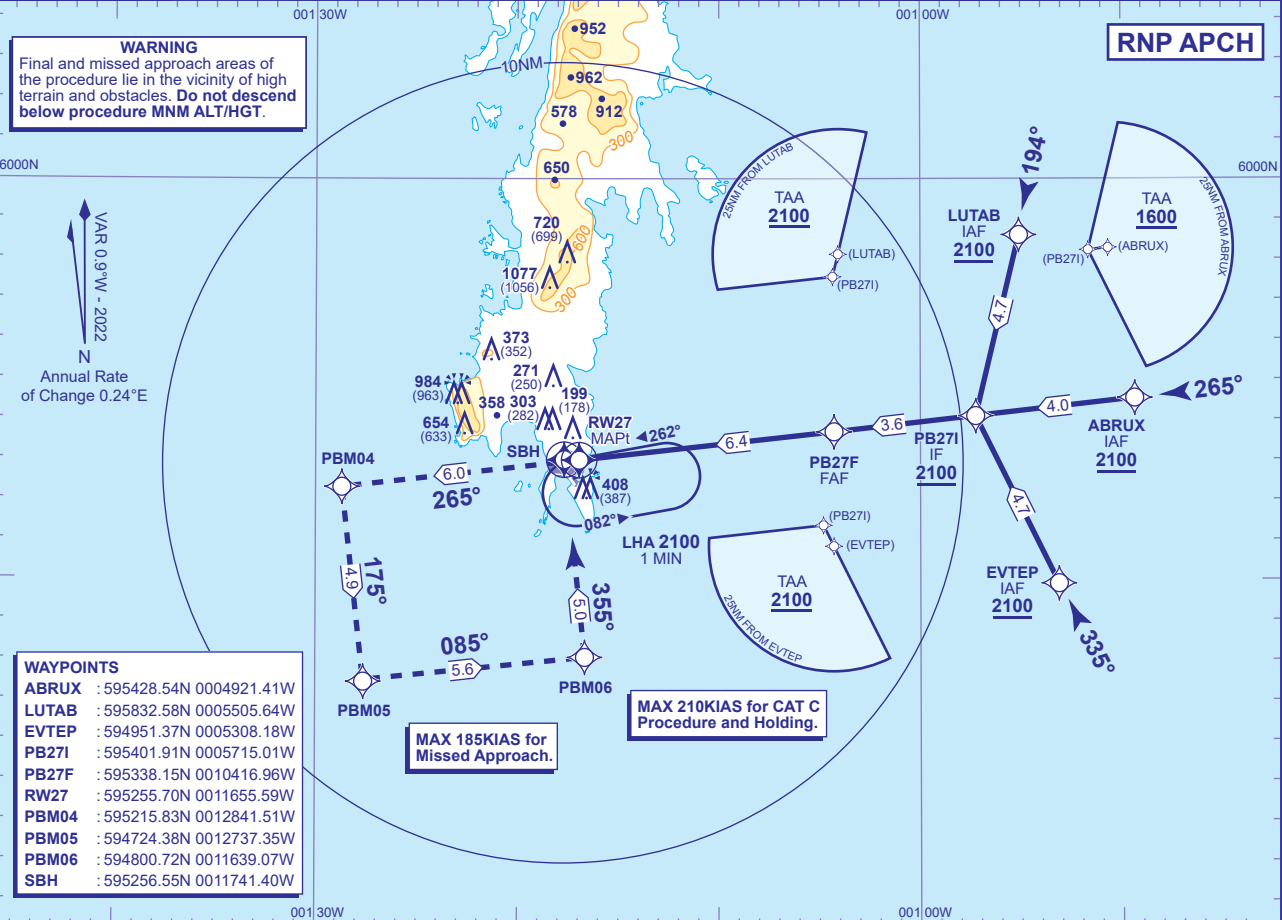


INSTRUMENT APPROACH CHART - ICAO

SUMBURGH
RNP
RWY 27
(ACFT CAT A,B,C)

| | | | | |
|------|------------------|----------------------|-----------------------|---------------------------------|
| TWR | 118.255 | SUMBURGH TOWER | AD ELEVATION | 21 |
| RAD | 131.300, 123.155 | SUMBURGH RADAR | THR ELEVATION | 21 |
| ATIS | 125.855 | SUMBURGH INFORMATION | OBSTACLE ELEVATION | 1077 AMSL (1056) (ABOVE THR) |
| AFIS | 118.255 | SUMBURGH INFORMATION | | |
| | | | BEARINGS ARE MAGNETIC | TRANSITION ALTITUDE 6000 |



CHANGE (12/21): EGNOS AND LPV REMOVED.